



# Background and Project Overview

## Larkspur Ferry Service Expansion and Parking Study



May 14, 2024



# Background

# Project Area Map





# Larkspur Ferry Terminal

- Built in 1976
- Located where the Corte Madera Channel moves into the Bay
- 25-acre site
- Ferry Terminal canopy
  - » Designed by Jacques de Brer
- Four ferry berths





# Parking Lots

## Main Parking Lot – 1,808 Parking Spaces

- 7 car pick-up/drop-off spaces
- 2 bus drop-off spaces
- 30 carpool/HOV spaces
- 28 spaces for persons with disabilities
- 2 electric vehicle spaces with charging
- 140 bike rack parking spaces
- 20 motorcycle spaces

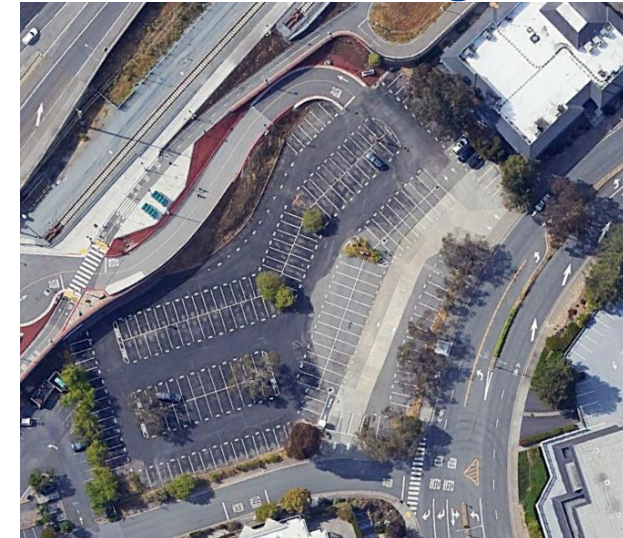
## North Parking Lot – 215 Parking Spaces

- Former Marin Airpotter lot
- Added in 2015
- Adjacent to SMART station

Main Parking Lot



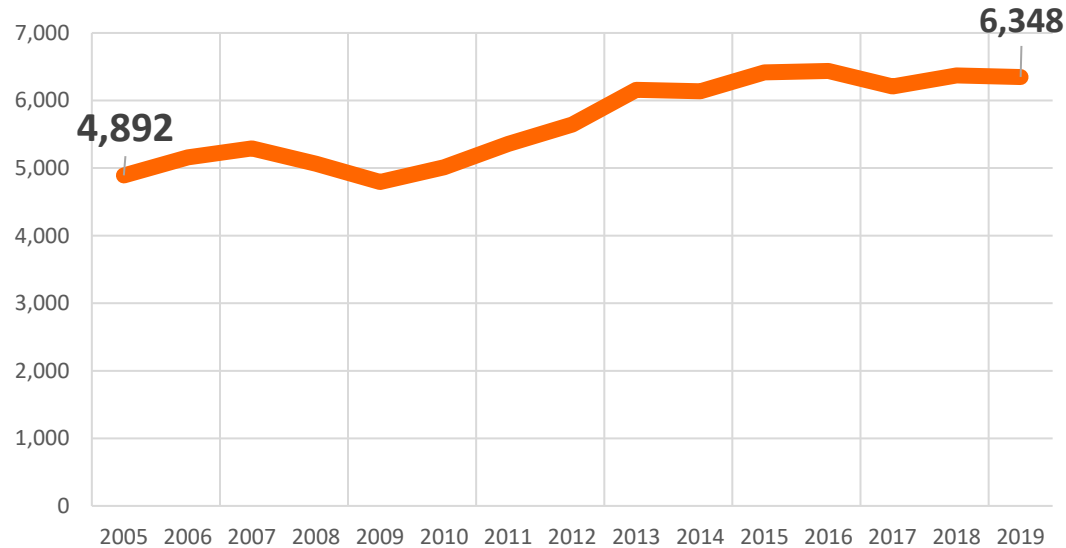
North Parking Lot





# Larkspur Ferry Ridership Growth – Pre-COVID

Larkspur Ferry - Average Weekday Ridership



**30% increase** in Larkspur Ferry weekday ridership (2005-2019)

**Daily Ferry Trips**  
Maximum: 40 to 42 (summer)  
revenue trips per-day





# Larkspur Ferry Terminal Access – Pre-COVID

**79%** of ferry riders drove and parked at the Terminal

**Main Lot** at capacity by 9:30-10:00 a.m. weekdays



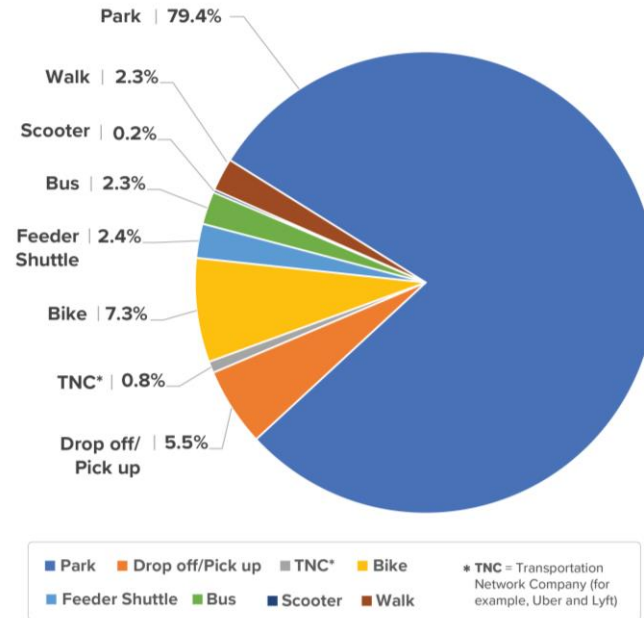
**North Lot** – often also at capacity



# Larkspur Ferry Terminal Access – Pre-COVID

# 14%

of ferry riders arrived by bike, bus, shuttle and other modes

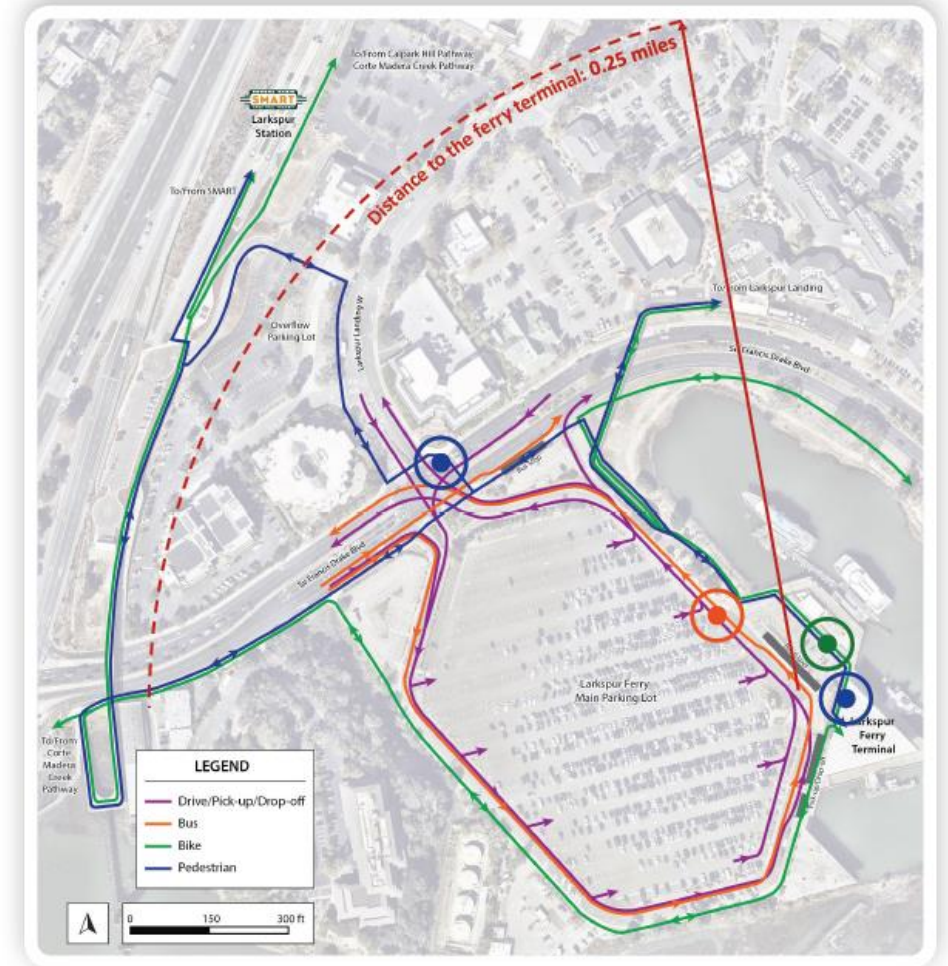


## Bicycling

- Along Class I trail to local destinations
- SMART Larkspur Station: 4-5 min (0.65-mile path)

## Pedestrian

- SMART Larkspur Station: 12-17 min (0.5- to 0.65-mile path)



Existing Landside Access for All Modes





# Transit Connections – Current

## Marin Transit – Sir Francis Drake stop adjacent to Ferry Terminal

- 800' walk (3-4 minutes)
- Route 17 – Downtown San Rafael-to-Sausalito
  - 3-4 Northbound-only trips/day serve Larkspur Ferry (7 days per week)
- Route 29 – San Rafael - E. Corte Madera
  - 12 total (all) North- and Southbound trips/day (Monday-Friday only)
- Route 228 – Downtown San Rafael - Fairfax Manor
  - 25-27 total (all) East- and Westbound trips/day (7 days per week)



## Sonoma-Marín Area Rail Transit (SMART) – Larkspur Station

- Serves North Bay, Marin and Sonoma Counties
- 0.5-0.65 mile walk (12-17 minutes)
- 38 weekday & 16 weekend trips per-day (North & Southbound)





# Project Overview



# Larkspur Ferry Service and Parking Expansion Study

The Bridge District is planning for the future and expects Larkspur Ferry ridership to return to pre-pandemic levels in the next few years and exceed those levels in subsequent years. This Study will define future parking and access needs:

- **Ferry Demand Forecasts** for 5-, 10- and 20-year horizons
- **Ferry Terminal Parking Structure** and landside access scenarios
- **Consensus** through stakeholder and community outreach
- **Environmental Clearance** for expanded ferry service and parking needs
- **Preliminary Parking Structure Design** in preparation for final design

## Future Action

- **District Board approval** prior to next phases of the project



# Where we are now

# Ferry Service Expansion and Parking Study Schedule

