



P.O. Box 4186
San Rafael
California 94913-4186

Phone: 415/507-2680
Fax: 415/507-2648

www.tam.ca.gov

Belvedere
Thomas Cromwell

Corte Madera
Alexandra Cock

Fairfax
Mary Ann Maggiore

Larkspur
Joan Lundstrom

Mill Valley
Stephanie Moulton-Peters

Novato
Carole Dillon-Knutson

Ross
Michael Skall

San Anselmo
Peter Breen

San Rafael
Al Boro

Sausalito
Paul Albritton

Tiburon
Alice Fredericks

County of Marin
Susan L. Adams
Hal Brown
Charles McGlashan
Steve Kinsey
Judy Arnold

EXECUTIVE COMMITTEE MEETING

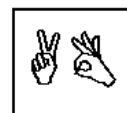
WEDNESDAY, FEBRUARY 13, 2008

2:00 P.M. – 5:30 P.M.

ROOM 324A, RUG ROOM
MARIN COUNTY CIVIC CENTER
3501 CIVIC CENTER DRIVE
SAN RAFAEL, CALIFORNIA

AGENDA – Page 1 of 1

1. Chair's Report (Discussion)
2. Commissioners Comments
3. Executive Director's Report
4. Approval of Minutes from January 16, 2008 Meeting (Action) – **Attachment**
5. Hwy 101 Gap Closure Update (Discussion) – Connie Preston
6. Central/Southern Marin Transit Study (Action) – **Attachment**
7. Regional Transportation Plan (Action) – **Attachment**
8. Bike Path Maintenance Policy (Action) – **Attachment**
9. Transportation Demand Management (Action) – **Attachment**
10. Open time for items not on the agenda



The meeting facilities are accessible to persons with disabilities. Requests for special accommodations (assisted listening device, sign language interpreters, etc.) should be directed to Denise Merleno, 415-507-2680 or email: dmerleno@tam.ca.gov **no later than 5 days** before the meeting date.