



P.O. Box 4186  
 San Rafael  
 California 94913-4186

Phone: 415/499-6570  
 Fax: 415/499-3799

www.tam.ca.gov

**TRANSPORTATION AUTHORITY OF MARIN**  
**THURSDAY, JANUARY 26TH, 2006**  
**7:30 P.M.**

**MARIN COUNTY CIVIC CENTER, ROOM 330**  
**3501 Civic Center Drive, San Rafael, California**

**AGENDA – Page 1 of 1**

**Belvedere**

Jerry Butler

**Corte Madera**

Melissa Gill

**Fairfax**

Lew Tremaine

**Larkspur**

Joan Lundstrom

**Mill Valley**

Dick Swanson

**Novato**

Pat Eklund

**Ross**

Jeanne Barr

**San Anselmo**

Peter Breen

**San Rafael**

Al Boro

**Sausalito**

Amy Belser

**Tiburon**

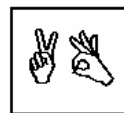
Alice Fredericks

**County of Marin**

Susan Adams  
 Hal Brown  
 Steve Kinsey  
 Charles McGlashan  
 Cynthia Murray

1. Chair's Report (Discussion)
2. Commissioners Matters not on the Agenda (Discussion)
3. Executive Director's Report (Discussion)
4. Commissioner Reports (Discussion)
  - a. Executive Committee – *Attachment -Chair Kinsey*
  - b. Marin-Sonoma Narrows Policy Advisory Group – *Commissioner Murray*
  - c. SMART – *Commissioner Boro*
  - d. Countywide Planning AdHoc Committee – *Commissioner McGlashan*
5. **CONSENT CALENDAR (Action) - Attachments**
  - a. Approval of TAM Minutes of December 15, 2005
  - b. Adopt Disadvantaged Business Enterprise Program
  - c. Professional Services Contract for Bicycle Plan Updates with Alta Consulting
  - d. Resolution Regarding TE Projects
  - e. STIP Planning, Programming, and Monitoring (PPM) Fund Transfer Agreement
6. Caltrans Report (Discussion) – *Doanh Nguyen*
7. 511 - Regional Rideshare Program Overview (Discussion) – *Tad Widby*
8. Marin County Transit District Status Report on Short Range Transit Plan (Discussion)
9. TAM Office Location (Action) – *Attachment*
10. Highway 101 GAP Closure Projects Status Report, Including Puerto Suello Hill Soundwall and Bike Path Alternatives (Action) - *Attachment*
11. Approval of Second Addendum to Professional Services Agreement with Nolte Associates, Inc. Agreement No-C-FY04/05-001.1, Budget Amendment – (Action) *Attachment*

**Making the Most of Marin County Transportation Dollars**



The meeting facilities are accessible to persons with disabilities. Requests for special accommodations (assisted listening device, sign language interpreters, etc.) should be directed to Kathleen Booth, 415-507-4176 or email: [kbooth@co.marlin.ca.us](mailto:kbooth@co.marlin.ca.us) no later than 5 days before the meeting date.