



**EXECUTIVE COMMITTEE MEETING**

**WEDNESDAY, JANUARY 11, 2006**

**2:00 P.M. – 5:00 P.M.**

**ROOM 324A, RUG ROOM  
MARIN COUNTY CIVIC CENTER  
3501 CIVIC CENTER DRIVE  
SAN RAFAEL, CALIFORNIA**

P.O. Box 4186  
San Rafael  
California 94913-4186

Phone: 415/499-6570  
Fax: 415/499-3799

www.tam.ca.gov

**Belvedere**

Jerry Butler

**Corte Madera**

Melissa Gill

**Fairfax**

Lew Tremaine

**Larkspur**

Joan Lundstrom

**Mill Valley**

Dick Swanson

**Novato**

Pat Eklund

**Ross**

Jeanne Barr

**San Anselmo**

Peter Breen

**San Rafael**

Al Boro

**Sausalito**

Amy Belser

**Tiburon**

Alice Fredericks

**County of Marin**

Susan Adams

Hal Brown

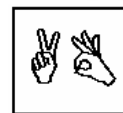
Steve Kinsey

Charles McGlashan

Cynthia Murray

1. Approval of Minutes from December 7, 2005 Meeting (Action) – *Attachment*
2. Commissioner Comments
3. Executive Director’s Report
4. TAM Benefit Options and Human Resources Choices (Discussion) – *Attachment*
5. TAM Office Location (Discussion) - *Attachment*
6. Debt and Investment Policy/Financial Advisor Procurement (Discussion) - *Attachment*
7. Measure A, Strategy 4, Crossing Guard Program – Funding and Contract Administration Options (Discussion) – *Attachment*
8. Open Time for Public Expression

**Making the Most of Marin County Transportation Dollars**



The meeting facilities are accessible to persons with disabilities. Requests for special accommodations (assisted listening device, sign language interpreters, etc.) should be directed to Kathleen Booth, 415-507-4176 or email: [kbooth@co.marlin.ca.us](mailto:kbooth@co.marlin.ca.us) no later than 5 days before the meeting date.